

Selas Fluid Aftermarket Product Support

A Wealth of Experience in Process Plant Equipment Support

Selas Fluid has been serving the refinery, petrochemical, pharmaceutical, and chemical industries for over 50 years. This experience coupled with our design expertise in hydrogen reforming, ethylene and EDC cracking, fired heaters, flame-based and flameless oxidation, and submerged combustion LNG vaporization allows us to provide a full range of services including:

- Revamps
- Engineering studies
- Service and construction
- Spare parts

Revamps

We can engineer, procure and construct:

- Emergency rebuilds
- Turnaround repairs
- Equipment upgrades
- Capacity expansions
- Low NOx burners
- Tube support castings
- BMS systems
- SCR systems

Spare Parts

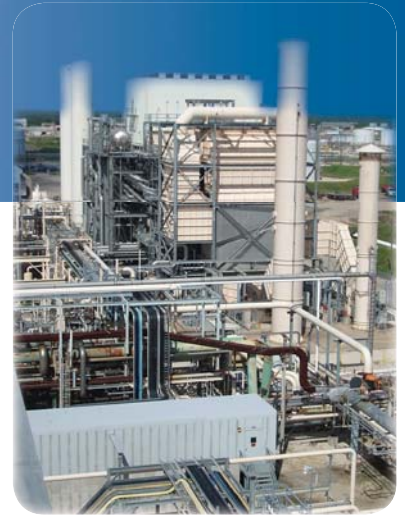
Our dedicated team of Aftermarket Support Specialists is made up of trained engineers and construction managers - individuals with extensive experience, understanding of the equipment they support and the needs of our clients. Backed by our engineering staff, they provide our clients the support and products required for their specific needs...world-wide. We strive to maintain strong relationships with our clients to understand their unique requirements in order to ensure timely, effective responses to requests, and continually work to expand our supplier network and sustain strong partnerships with those we have worked with over many years.

Examples of the equipment and parts we supply:

- Convection and radiant coils
- Cast tube supports
- Finned tubes
- Expansion joints
- Seal boots
- Observation doors/plugs
- Spring supports
- Dampers and actuators
- Refractory/ceramic media
- Instrumentation and controls, transmitters, etc.



Procuring from our global suppliers and construction partners, we have strategically located our resources to ensure cost-effective, timely project delivery. Our procurement team strives to purchase commodities local to client sites as much as possible to minimize transportation costs and duties. We also maintain an inventory of frequently used parts in our warehouse.



Did you know...

Headquartered in Blue Bell, PA USA, Selas Fluid also has a nearby technology center where we maintain pilot plants for research and development on systems and combustion technologies and perform active demonstrations to clients to validate processes. We also maintain offices in Houston, TX to provide prompt support to our clients in the Gulf and western U.S. regions, as well as Central and South America.

We work with partners in Saudi Arabia and South America to further serve our clients, and as a subsidiary of Linde, have a global network of engineering, supply, and construction resources to draw upon.



Engineering Studies

With in-house mechanical and chemical process design and engineering, we provide the following services to support revamp efforts:

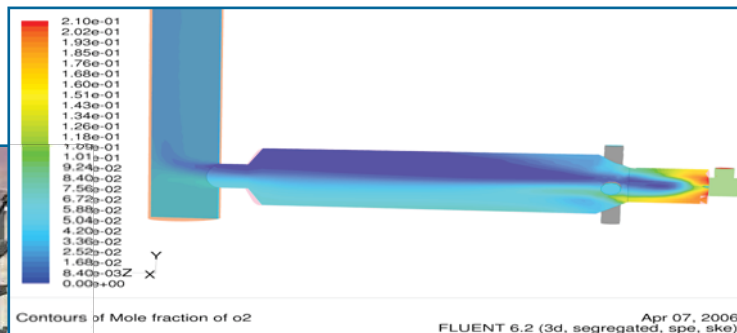
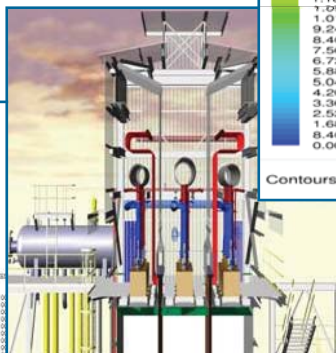
- Process design, simulation, and CFD modeling
- Economic evaluations
- Feasibility studies
- Re-rating
- Hazop analysis
- Efficiency improvements

```

ANSYS CFX-11.0 - Engineering Simulation
Date: 04/07/2006 11:03:00
System Transfer Date & Time: 04/07/2006 11:03:00
Reading Engineering Model: FTA...

Intergraph Element Types are:
1 - 4 WAY VALVES      21 - CONCENTRIC REDUCERS      22 - TEE
2 - 4 WAY VALVES      23 - BEND PIPE             24 - EXPANSION JOINTS
3 - 4 WAY VALVES      25 - PULLEY BRG             26 - PULLEY BRG
4 - CHECKS            26 - CHECKS & BRANCHES      27 - SADDLE
5 - ELEMENT INJECTS   27 - CHECKS & BRANCHES      28 - COUPLERS
6 - SUPPORTS REDUCERS 28 - SUPPORTS REDUCERS      29 - COUPLERS
7 - FLANGES           29 - FLANGES
8 - SUPPORTS & HANGERS 30 - SUPPORTS & HANGERS      31 - PAGES
9 - PAGES             31 - PAGES
10 - PIPES            32 - BRANCH COMPONENTS
11 - PIPES            33 - BRANCH COMPONENTS
12 - PIPES            34 - BRANCH COMPONENTS
13 - PIPES            35 - BRANCH COMPONENTS
14 - PIPES            36 - BRANCH COMPONENTS
15 - PIPES            37 - BRANCH COMPONENTS
16 - PIPES            38 - BRANCH COMPONENTS
17 - PIPES            39 - BRANCH COMPONENTS
18 - PIPES            40 - BRANCH COMPONENTS
19 - PIPES            41 - BRANCH COMPONENTS
20 - PIPES            42 - BRANCH COMPONENTS
21 - PIPES            43 - BRANCH COMPONENTS
22 - PIPES            44 - BRANCH COMPONENTS
23 - PIPES            45 - BRANCH COMPONENTS
24 - PIPES            46 - BRANCH COMPONENTS
25 - PIPES            47 - BRANCH COMPONENTS
26 - PIPES            48 - BRANCH COMPONENTS
27 - PIPES            49 - BRANCH COMPONENTS
28 - PIPES            50 - BRANCH COMPONENTS
29 - PIPES            51 - BRANCH COMPONENTS
30 - PIPES            52 - BRANCH COMPONENTS
31 - PIPES            53 - BRANCH COMPONENTS
32 - PIPES            54 - BRANCH COMPONENTS
33 - PIPES            55 - BRANCH COMPONENTS
34 - PIPES            56 - BRANCH COMPONENTS
35 - PIPES            57 - BRANCH COMPONENTS
36 - PIPES            58 - BRANCH COMPONENTS
37 - PIPES            59 - BRANCH COMPONENTS
38 - PIPES            60 - BRANCH COMPONENTS
39 - PIPES            61 - BRANCH COMPONENTS
40 - PIPES            62 - BRANCH COMPONENTS
41 - PIPES            63 - BRANCH COMPONENTS
42 - PIPES            64 - BRANCH COMPONENTS
43 - PIPES            65 - BRANCH COMPONENTS
44 - PIPES            66 - BRANCH COMPONENTS
45 - PIPES            67 - BRANCH COMPONENTS
46 - PIPES            68 - BRANCH COMPONENTS
47 - PIPES            69 - BRANCH COMPONENTS
48 - PIPES            70 - BRANCH COMPONENTS
49 - PIPES            71 - BRANCH COMPONENTS
50 - PIPES            72 - BRANCH COMPONENTS
51 - PIPES            73 - BRANCH COMPONENTS
52 - PIPES            74 - BRANCH COMPONENTS
53 - PIPES            75 - BRANCH COMPONENTS
54 - PIPES            76 - BRANCH COMPONENTS
55 - PIPES            77 - BRANCH COMPONENTS
56 - PIPES            78 - BRANCH COMPONENTS
57 - PIPES            79 - BRANCH COMPONENTS
58 - PIPES            80 - BRANCH COMPONENTS
59 - PIPES            81 - BRANCH COMPONENTS
60 - PIPES            82 - BRANCH COMPONENTS
61 - PIPES            83 - BRANCH COMPONENTS
62 - PIPES            84 - BRANCH COMPONENTS
63 - PIPES            85 - BRANCH COMPONENTS
64 - PIPES            86 - BRANCH COMPONENTS
65 - PIPES            87 - BRANCH COMPONENTS
66 - PIPES            88 - BRANCH COMPONENTS
67 - PIPES            89 - BRANCH COMPONENTS
68 - PIPES            90 - BRANCH COMPONENTS
69 - PIPES            91 - BRANCH COMPONENTS
70 - PIPES            92 - BRANCH COMPONENTS
71 - PIPES            93 - BRANCH COMPONENTS
72 - PIPES            94 - BRANCH COMPONENTS
73 - PIPES            95 - BRANCH COMPONENTS
74 - PIPES            96 - BRANCH COMPONENTS
75 - PIPES            97 - BRANCH COMPONENTS
76 - PIPES            98 - BRANCH COMPONENTS
77 - PIPES            99 - BRANCH COMPONENTS
80 - PIPES            100 - BRANCH COMPONENTS

```



Service and Construction

Selas Fluid's support doesn't end with the supply of new equipment. We also offer field services that include plant commissioning and start-up, unit inspections, operator training, and construction management. Our construction management teams are experienced professionals who demand high standards at each project site, with a goal to always provide an incident-free workplace. We have recently logged over 27 million man hours with no safety incidents. Holding safety in high regard, we not only meet - but



Construction services provided by Selas Fluid on an ethylene plant

exceed - OSHA requirements. Our commitment to safety, planning, and productivity has garnered our construction team the "Contractor of the Month" award twice by the Tasnee Project Site Management Team. This honor is presented to the site contractor demonstrating the highest levels of safety, planning, execution, and management throughout the entire project.

Selas Fluid Processing Corporation is a wholly-owned subsidiary of the Linde Group. Since 1946, we have provided timely and innovative solutions to meet customer needs.

Call us today to learn more about our technologies and services, or visit us online at www.selasfluid.com

Five Sentry Parkway East
Blue Bell, PA 19422 USA
(610) 834-0300 Telephone
(610) 834-0473 Facsimile

16225 Park Ten Place, Suite 250
Houston, TX 77084
(281) 717-9090 Telephone
(281) 717-9091 Facsimile

